

October 8, 2021

DREYFUS CASH MANAGEMENT FUNDS
Service Shares and Wealth Shares

Supplement to Current Summary Prospectus and Prospectus

Low balance account fees and redemption policy

Low balance accounts may be subject to a small account fee or to redemption, as described below.

Small Account Policies

To offset the relatively higher cost of maintaining smaller shareholder accounts, if the net asset value of your account is below the fund's minimum initial investment requirement for the particular class of fund shares, the fund may charge your account a fee of \$10.00 that is determined and assessed annually. The small account fee will be charged by redeeming shares in your account.

For certain accounts, if the net asset value of your account is below the fund's minimum initial investment requirement for the particular class of fund shares, the fund reserves the right to redeem all of the remaining shares in your account, close the account and send you the redemption proceeds. Accounts of shareholders who have accounts in other funds in the BNY Mellon Family of Funds with aggregate net assets of greater than \$10,000, accounts participating in automatic investment programs, Retirement Plan accounts and accounts opened through certain financial intermediaries will not be subject to mandatory redemption.

Before either of the actions described above is taken, you will be given 60 days' advance written notice to give you time to increase your account balance to the required minimum amount if you are eligible to invest in the fund and have an address in good order with the fund's transfer agent.

DREYFUS MONEY MARKET FUNDS
Funds Other Than Municipal, Treasury Only and Government Only Money Market Funds

Supplement to Current Summary Prospectus and Prospectus

The following information supplements the information contained in the section of the fund's Summary Prospectus and Prospectus entitled "Fund Summary—Principal Investment Strategy" and in the section of the fund's Prospectus entitled "Fund Details—Goal and Approach":

The fund seeks to invest in securities that present minimal credit risk, based on BNY Mellon Investment Adviser's assessment of the issuer's or guarantor's credit quality and capacity to meet its financial obligations, among other factors. As part of the security selection process, where appropriate and as applicable, and to the extent relevant information is available, BNY Mellon Investment Adviser also evaluates whether environmental, social and governance (ESG) factors could have a positive, negative or neutral impact on the cash flows or risk profiles of the issuers or guarantors of the securities in which the fund may invest. In evaluating ESG factors, BNY Mellon Investment Adviser will use ESG research developed by one or more of its affiliates as well as ESG ratings and other material information provided by third parties and the issuers or guarantors of securities in which the fund may invest. When considered material, identified ESG factors are incorporated within BNY Mellon Investment Adviser's credit risk analysis, but BNY Mellon Investment Adviser may determine that other attributes of an investment outweigh ESG considerations when making an investment decision. Further, BNY Mellon Investment Adviser may not consider ESG ratings or other ESG data in connection with every investment decision it makes on behalf of the fund. As a result, securities of issuers or securities guaranteed by guarantors that may be negatively impacted by ESG factors may be purchased and retained by the fund, while the fund may divest or not invest in securities of issuers or securities guaranteed by guarantors that may be positively impacted by such factors.

The following information supplements the information contained in the section of the fund's Summary Prospectus and Prospectus entitled "Fund Summary—Principal Risks" and in the section of the fund's Prospectus entitled "Fund Details—Investment Risks":

- *ESG evaluation risk.* The fund's incorporation of ESG considerations into its investment approach may cause it to make different investments than funds that invest in money market securities but do not incorporate ESG considerations when selecting investments. Under certain economic conditions, this could cause the fund to underperform funds that do not incorporate ESG considerations. For example, the incorporation of ESG considerations may result in the fund forgoing opportunities to buy certain securities when it might otherwise be advantageous to do so or selling securities when it might otherwise be disadvantageous for the fund to do so. The incorporation of ESG considerations may also affect the fund's exposure to certain sectors and/or types of investments, and may adversely impact the fund's performance depending on whether such sectors or investments are in or out of favor in the market. BNY Mellon Investment Adviser's security selection process incorporates ESG data provided by affiliated and unaffiliated data providers, which may be limited for certain issuers and guarantors and/or only take into account one or a few ESG related components. In addition, ESG data may include quantitative and/or qualitative measures, and consideration of this data may be subjective. Different methodologies may be used by the various data sources that provide ESG data for issuers and guarantors, including the issuers and guarantors themselves. ESG data from data providers used by BNY Mellon Investment Adviser often lacks standardization, consistency and transparency, and for certain issuers and guarantors, such data, including ESG ratings and scores, may not be available, complete or accurate. BNY Mellon Investment Adviser's evaluation of ESG factors relevant to the cash flows or risk profile of a

particular issuer or guarantor of securities, or otherwise, may be adversely affected in such instances. As a result, the fund's investments may differ from, and potentially underperform, funds that incorporate ESG data from other sources or utilize other methodologies.

* * * * *

Dreyfus Government Cash Management

Wealth Shares (Ticker Symbol:DGQXX)

Summary Prospectus

June 1, 2021

Before you invest, you may want to review the fund's prospectus, which contains more information about the fund and its risks. You can find the fund's prospectus and other information about the fund, including the statement of additional information and most recent reports to shareholders, online at <http://im.bnymellon.com/literaturecenter/fa>. You can also get this information at no cost by calling 1-800-373-9387 (inside the U.S. only) or by sending an e-mail request to info@bnymellon.com. The fund's prospectus and statement of additional information, dated June 1, 2021 (each as revised or supplemented), are incorporated by reference into this summary prospectus.

Dreyfus Government Cash Management Investment Objective

The fund seeks as high a level of current income as is consistent with the preservation of capital and the maintenance of liquidity.

Fees and Expenses

This table describes the fees and expenses that you may pay if you buy, hold and sell shares of the fund. **You may pay other fees, such as brokerage commissions and other fees to financial intermediaries, which are not reflected in the table and examples below.**

Annual Fund Operating Expenses (expenses that you pay each year as a percentage of the value of your investment)	
	Wealth Shares
Management fees	.20
Other expenses:	
Shareholder services fees	.25
Miscellaneous other expenses	.10
Total other expenses	.35
Total annual fund operating expenses	.55

Example

The Example is intended to help you compare the cost of investing in the fund with the cost of investing in other mutual funds. The Example assumes that you invest \$10,000 in the fund for the time periods indicated and then hold or redeem all of your shares at the end of those periods. The Example also assumes that your investment has a 5% return each year and that the fund's operating expenses remain the same. Although your actual costs may be higher or lower, based on these assumptions your costs would be:

	1 Year	3 Years	5 Years	10 Years
Wealth Shares	\$56	\$176	\$307	\$689

Principal Investment Strategy

The fund pursues its investment objective by investing only in government securities (i.e., securities issued or guaranteed as to principal and interest by the U.S. government or its agencies or instrumentalities, including those with floating or variable rates of interest), repurchase agreements collateralized solely by government securities and/or cash, and cash. The fund is a money market fund subject to the maturity, quality, liquidity and diversification requirements of Rule 2a-7 under the Investment Company Act of 1940, as amended, and seeks to maintain a stable share price of \$1.00.

The fund is a "government money market fund," as that term is defined in Rule 2a-7, and as such is required to invest at least 99.5% of its total assets in securities issued or guaranteed as to principal and interest by the U.S. government or its agencies or instrumentalities, repurchase agreements collateralized solely by cash and/or government securities, and cash. The fund normally invests at least 80% of its net assets in government securities and repurchase agreements collateralized solely by government securities (i.e., under normal circumstances, the fund will not invest more than 20% of its net assets in cash and/or repurchase agreements collateralized by cash). The securities in which the fund invests include those backed by the full faith and credit of the U.S. government, which include U.S. Treasury securities as well as securities issued by certain agencies of the U.S. government, and those that are neither insured nor guaranteed by the U.S. government.

Principal Risks

An investment in the fund is not a bank deposit. It is not insured or guaranteed by the Federal Deposit Insurance Corporation (FDIC) or any other government agency. You could lose money by investing in the fund. Although the fund seeks to preserve the value of your investment at \$1.00 per share, it cannot guarantee it will do so. The fund's yield will fluctuate as the short-term securities in its portfolio mature or are sold and the proceeds are reinvested in securities with different interest rates. The fund currently is not permitted to impose a fee upon the sale of shares (a "liquidity fee") or temporarily suspend redemptions (a redemption "gate") under distressed conditions as some other types of money market funds are, and the fund's board has no intention to impose a liquidity fee or redemption gate. Neither BNY Mellon Investment Adviser, Inc. nor its affiliates have a legal obligation to provide financial support to the fund, and you should not expect that BNY Mellon Investment Adviser, Inc. or its affiliates will provide financial support to the fund at any time. The following are the principal risks that could reduce the fund's income level and/or share price:

- *Interest rate risk.* This risk refers to the decline in the prices of fixed-income securities that may accompany a rise in the overall level of interest rates. A sharp and unexpected rise in interest rates could impair the fund's ability to maintain a stable net asset value. Very low or negative interest rates may magnify interest rate risk. In addition, a low interest rate environment may prevent the fund from providing a positive yield or paying fund expenses out of fund assets and could impair the fund's ability to maintain a stable net asset value. Interest rates in the United States currently are at or near historic lows due to market forces and actions of the Board of Governors of the Federal Reserve System in the U.S., primarily in response to the novel coronavirus (COVID-19) pandemic and resultant market disruptions. Changing interest rates, including rates that fall below zero, may have unpredictable effects on markets, may result in heightened market volatility and may detract from fund performance. For floating and variable rate obligations, there may be a lag between an actual change in the underlying interest rate benchmark and the reset time for an interest payment of such an obligation, which could harm or benefit the fund, depending on the interest rate environment or other circumstances.
- *Liquidity risk.* When there is little or no active trading market for specific types of securities, it can become more difficult to sell the securities in a timely manner at or near their perceived value. In such a market, the value of such securities may fall dramatically, potentially impairing the fund's ability to maintain a stable net asset value.
- *U.S. Treasury securities risk.* A security backed by the U.S. Treasury or the full faith and credit of the United States is guaranteed only as to the timely payment of interest and principal when held to maturity, but the market prices for such securities are not guaranteed and will fluctuate.
- *Government securities risk.* Not all obligations of the U.S. government, its agencies and instrumentalities are backed by the full faith and credit of the U.S. Treasury. Some obligations are backed only by the credit of the issuing agency or instrumentality, and in some cases there may be some risk of default by the issuer. Any guarantee by the U.S. government or its agencies or instrumentalities of a security held by the fund does not apply to the market value of such security or to shares of the fund itself.
- *Repurchase agreement counterparty risk.* The fund is subject to the risk that a counterparty in a repurchase agreement could fail to honor the terms of the agreement.
- *Market risk.* The value of the securities in which the fund invests may be affected by political, regulatory, economic and social developments. Events such as war, acts of terrorism, the spread of infectious illness or other public health issue, recessions, or other events could have a significant impact on the fund and its investments. Recent examples include pandemic risks related to COVID-19 and aggressive measures taken world-wide in response by governments, including closing borders, restricting international and domestic travel, and the imposition of prolonged quarantines of large populations, and by businesses, including changes to operations and reducing staff.

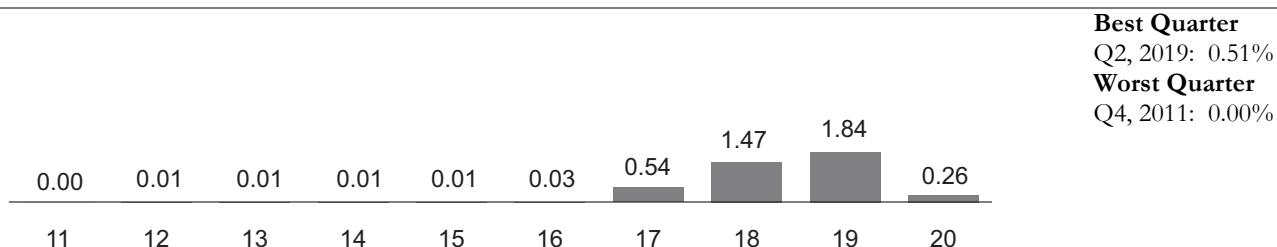
Performance

The following bar chart and table provide some indication of the risks of investing in the fund. The bar chart shows changes in the performance of the fund's Investor shares from year to year. The table shows the average annual total returns of the fund's

Investor shares over time. The fund's past performance is not necessarily an indication of how the fund will perform in the future. More recent performance information may be available at www.dreyfus.com.

The historical performance of the fund's Investor shares, which are not offered in this prospectus, is shown in the bar chart and table since past performance information for a full calendar year is not available for Wealth shares as of the date of this prospectus. Each share class is invested in the same portfolio of securities, and the annual returns would have differed only to the extent that the classes have different expenses. Accordingly, because Wealth shares have a higher total annual expense ratio than Investor shares, the performance shown for Wealth shares would have been lower.

Year-by-Year Total Returns as of 12/31 each year (%)*



The year-to-date total return of the fund's Wealth shares as of March 31, 2021 was 0.01%.

Average Annual Total Returns as of 12/31/20*

1 Year	5 Years	10 Years
0.26%	0.82%	0.42%

For the current yield, call toll-free 1-800-373-9387 (inside the U.S. only).

* Reflects the performance of the fund's Investor shares which are offered in a separate prospectus.

Portfolio Management

The fund is managed by Dreyfus Cash Investment Strategies, a division of BNY Mellon Investment Adviser, Inc., the fund's investment adviser.

Purchase and Sale of Fund Shares

The fund's Wealth shares are available to investors who purchase fund shares directly from the fund for accounts maintained with the fund or through a third party, such as a bank, broker-dealer or financial adviser, or through a Retirement Plan (as defined below). In general, the fund's minimum initial investment for Wealth shares is \$2,500 and the minimum subsequent investment is \$1.00. You may sell (redeem) your shares on any business day by calling 1-800-373-9387 (inside the U.S. only) or by visiting www.dreyfus.com. If you invested directly through the fund, you may mail your request to sell shares to BNY Mellon Shareholder Services, P.O. Box 9879, Providence, Rhode Island 02940-8079. If you invested in the fund through a third party or through a Retirement Plan, you may mail your request to sell shares to BNY Mellon Institutional Department, P.O. Box 9882, Providence, Rhode Island 02940-8082.

Retirement Plans include qualified or non-qualified employee benefit plans, such as 401(k), 403(b)(7), Keogh, pension, profit-sharing and other deferred compensation plans, whether established by corporations, partnerships, sole proprietorships, non-profit entities, trade or labor unions, or state and local governments, but do not include IRAs (including, without limitation, traditional IRAs, Roth IRAs, Coverdell Education Savings Accounts, IRA "Rollover Accounts" or IRAs set up under Simplified Employee Pension Plans (SEP-IRAs), Salary Reduction Simplified Employee Pension Plans (SARSEPs) or Savings Incentive Match Plans for Employees (SIMPLE IRAs)).

Tax Information

The fund's distributions are taxable as ordinary income or capital gains, except when your investment is through a U.S. tax-advantaged investment plan (in which case you may be taxed upon withdrawal of your investment from such account).

Payments to Broker-Dealers and Other Financial Intermediaries

If you purchase shares through a broker-dealer or other financial intermediary (such as a bank), the fund's distributor and its related companies may pay the intermediary for the sale of fund shares and related services. To the extent that the intermediary may receive lesser or no payments in connection with the sale of other investments, the payments from the fund's distributor and its related companies may create a potential conflict of interest by influencing the broker-dealer or other intermediary and your financial representative to recommend the fund over the other investments. This potential conflict of interest may be addressed by policies, procedures or practices adopted by the financial intermediary. As there may be many different policies, procedures or practices adopted by different intermediaries to address the manner in which compensation is earned through the sale of investments or the provision of related services, the compensation rates and other payment arrangements that may apply to a financial intermediary and its representatives may vary by intermediary. Ask your financial representative or visit your financial intermediary's website for more information.

This prospectus does not constitute an offer or solicitation in any state or jurisdiction in which, or to any person to whom, such offering or solicitation may not lawfully be made.