

Baird Core Plus Bond Fund

Trading Symbols:

BCOSX – Investor Class Shares

BCOIX – Institutional Class Shares

Summary Prospectus

May 1, 2011

Before you invest, you may want to review the Fund's prospectus, which contains more information about the Fund and its risks. You can find the Fund's prospectus and other information about the Fund, including the Fund's statement of additional information and shareholder reports, online at www.bairdfunds.com. You may also obtain this information at no cost by calling 1-866-442-2473 or by sending an e-mail request to prospectus@bairdfunds.com. The Fund's prospectus and statement of additional information, both dated May 1, 2011, are incorporated by reference into this Summary Prospectus.

Investment Objective

The investment objective of the Baird Core Plus Bond Fund (the “Fund”) is to seek an annual rate of total return, before fund expenses, greater than the annual rate of total return of the Barclays Capital U.S. Universal Bond Index.

Fees and Expenses of the Fund

The table below describes the fees and expenses that you may pay if you buy and hold shares of the Fund.

Shareholder Fees

(fees paid directly from your investment)

None

Annual Fund Operating Expenses

(expenses that you pay each year as a percentage of the value of your investment)

	<i>Investor Class Shares</i>	<i>Institutional Class Shares</i>
Management Fees	0.25%	0.25%
Distribution and Service (12b-1) Fees	0.25%	None
Other Expenses	0.05%	0.05%
Total Annual Fund Operating Expenses	0.55%	0.30%

Example

This Example is intended to help you compare the cost of investing in a Fund with the cost of investing in other mutual funds.

The Example assumes that you invest \$10,000 in the Fund for the time periods indicated and then redeem all of your shares at the end of those periods. The Example also assumes that your investment has a 5% return each year and that the Fund’s operating expenses remain the same. Although your actual costs may be higher or lower, based on these assumptions your costs would be:

	1 Year	3 Years	5 Years	10 Years
Investor Class Shares	\$56	\$176	\$307	\$689
Institutional Class Shares	\$31	\$97	\$169	\$381

Portfolio Turnover

The Fund pays transaction costs, such as commissions, when it buys and sells securities (or “turns over” its portfolio). A higher portfolio turnover rate may indicate higher transaction costs and may result in higher taxes when Fund shares are held in a taxable account. These costs, which are not reflected in total annual fund operating expenses or in the example, affect the Fund’s performance. During the most recent fiscal year, the Fund’s portfolio turnover rate was 61.5% of the average value of its portfolio.

Principal Investment Strategies

The Fund normally invests at least 80% of its net assets in the following types of U.S. dollar-denominated debt securities:

- U.S. government and other public-sector entities
- Asset-backed and mortgage-backed obligations of U.S. and foreign issuers
- Corporate debt of U.S. and foreign issuers

The Fund invests primarily in investment-grade debt securities, but may invest up to 20% of its net assets in non-investment grade securities (sometimes referred to as “high yield” or “junk” bonds). Non-investment grade securities, at the time of purchase, are generally rated at least B or higher by Standard & Poor’s (“S&P”) or Moody’s Investors Service (“Moody’s”) or have an equivalent rating by another nationally recognized rating agency. The Fund may also invest in unrated debt obligations that are determined by Robert W. Baird & Co. Incorporated (the “Advisor”) to be comparable in quality to the rated obligations. Average quality for the Core Plus Bond Fund is normally expected to be at least the third highest rating category for S&P or Moody’s.

The Advisor attempts to keep the duration of the Fund’s portfolio substantially equal to that of its benchmark. The dollar-weighted average portfolio effective maturity of the Fund will normally be more than five years but less than 10 years. The Advisor attempts to diversify the Fund’s portfolio by holding securities of many different issuers and choosing issuers in a variety of sectors.

In determining which securities to buy for the Fund, the Advisor attempts to achieve returns that exceed the Fund’s benchmark primarily in three ways:

- *Yield curve positioning:* The Advisor selects securities with maturities and yields that it believes have the greatest potential for achieving the Fund’s objective, while attempting to match the average duration of the securities in the Fund with the average duration of the securities in the Fund’s benchmark.
- *Sector allocation:* The Advisor invests in securities in those sectors which it believes represent the greatest potential for achieving the Fund’s objective.
- *Security selection:* The Advisor determines which issuers it believes offer the best relative value within each sector and then decides which available securities of that issuer to purchase.

The Advisor generally will sell a security when, on a relative basis and in the Advisor’s opinion, it will no longer help the Fund attain its objective.

Principal Risks

Please be aware that you may lose money by investing in the Fund. The following is a summary description of certain risks of investing in the Fund.

Management Risks

The Advisor may err in its choices of securities or portfolio mixes. Such errors could result in a negative return and a loss to you.

Bond Market Risks

A bond’s market value is affected significantly by changes in interest rates – generally, when interest rates rise, the bond’s market value declines and when interest rates decline, its market value rises (“interest-rate risk”). Generally, a bond with a longer maturity will entail greater interest rate risk but have a higher yield. Conversely, a bond with a shorter maturity will entail less interest rate risk but have a lower yield (“maturity risk”). A bond’s value may also be affected by changes in

its credit quality rating or the issuer's financial condition ("credit-quality risk"). U.S. and international markets have experienced extreme volatility, reduced liquidity, credit downgrades, increased likelihood of default and valuation difficulties in recent years.

Credit Quality Risks

Bonds receiving the lowest investment grade rating or a high yield ("junk bond") rating may have speculative characteristics and, compared to higher grade securities, may have a weakened capacity to make principal and interest payments due to changes in economic conditions or other adverse circumstances. Ratings are essentially opinions of the credit quality of an issuer and may prove to be inaccurate.

Non-Investment Grade Bond Risks

Non-investment grade bonds involve greater risk than investment-grade securities, including the possibility of default or bankruptcy. They tend to be more sensitive to economic conditions than higher-rated debt securities and, as a result, are generally more sensitive to credit risk than securities in the higher-rated categories.

Mortgage- and Asset-Backed Securities Risks

Mortgage- and asset-backed securities are subject to interest rate risk. Modest movements in interest rates (both increases and decreases) may quickly and significantly reduce the value of certain types of these securities. When interest rates fall, mortgage- and asset-backed securities may be subject to prepayment risk. When interest rates rise, certain types of mortgage- and asset-backed securities are subject to extension risk. Mortgage- and asset-backed securities can also be subject to the risk of default on the underlying residential or commercial mortgage(s) or other assets.

Extension Risk

Extension risk is the risk that debt securities, including mortgage- and asset-backed securities, will be paid off by the borrower more slowly than anticipated, increasing the average life of such securities and the sensitivity of the prices of such securities to future interest rate changes.

Government Obligations Risks

No assurance can be given that the U.S. government will provide financial support to U.S. government-sponsored agencies or instrumentalities where it is not obligated to do so by law. While the U.S. government provides financial support to various U.S. government-sponsored agencies and instrumentalities, such as the Federal National Mortgage Association ("Fannie Mae") and the Federal Home Loan Mortgage Corporation ("Freddie Mac"), no assurance can be given that it will always do so.

Liquidity Risks

Certain securities may be difficult or impossible to sell at the time and price that the Advisor would like to sell. The Advisor may have to lower the price, sell other securities or forego an investment opportunity, any of which may have a negative effect on the management or performance of the Fund.

Foreign Securities Risks

Foreign investments, even those that are U.S. dollar-denominated, may involve additional risk, including political and economic instability, differences in financial reporting standards and less regulated securities markets.

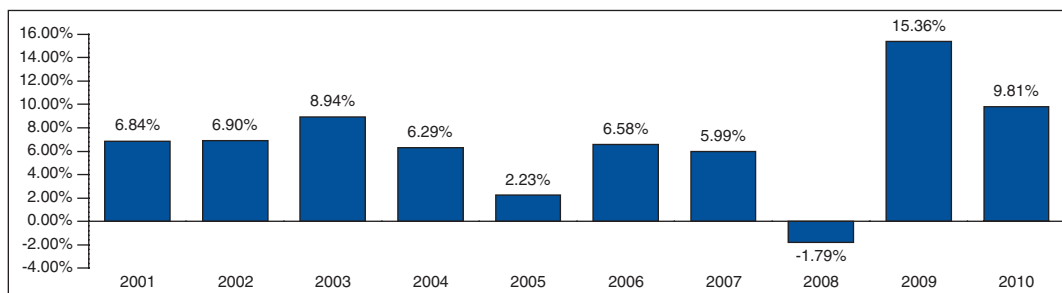
Valuation Risks

The prices provided by the Fund's pricing service or independent dealers or the fair value determinations made by the valuation committee of the Advisor may be different from the prices used by other mutual funds or from the prices at which securities are actually bought and sold. The prices of certain securities provided by pricing services may be subject to frequent and significant change, and will vary depending on the information that is available.

Performance

The performance information provides some indication of the risks of investing in the Fund by showing changes in the Fund's performance from year to year and by showing how the Fund's average annual returns for one, five and ten years and since inception compare with those of a broad measure of market performance. Past performance, before and after taxes, is not necessarily an indication of how the Fund will perform in the future. Updated performance information is available on the Fund's website at www.bairdfunds.com or by calling the Fund toll-free at 1-866-442-2473.

Calendar Year Returns for Institutional Class Shares



Best quarter: 3rd quarter 2009 7.15%
Worst quarter: 2nd quarter 2004 -2.45%

After-tax returns are shown only for Institutional Class shares, and the after-tax returns for Investor Class shares will vary. After-tax returns are calculated using the highest individual federal marginal income tax rates and do not reflect the impact of state and local taxes. Your actual after-tax returns depend on your tax situation and may differ from those shown. After-tax returns are not relevant if you hold your shares through a tax-deferred account, such as a 401(k) plan or an individual retirement account.

Average Annual Total Returns as of December 31, 2010

	<u>1 Year</u>	<u>5 Years</u>	<u>10 Years</u>	<u>Since Inception (9/29/00)</u>
<i>Institutional Class</i>				
Return Before Taxes	9.81%	7.04%	6.63%	7.06%
Return After Taxes on Distributions	7.54%	4.87%	4.33%	4.76%
Return After Taxes on Distributions and Sale of Fund Shares	6.41%	4.73%	4.31%	4.69%
<i>Investor Class</i>				
Return Before Taxes	9.53%	6.79%	6.37%	6.79%
Barclays Capital U.S. Universal Bond Index (reflects no deduction for fees, expenses or taxes)	7.16%	5.90%	6.08%	6.30%

Investment Advisor

Robert W. Baird & Co. Incorporated is the Fund's investment advisor.

Portfolio Managers

<u>Name</u>	<u>Portfolio Manager of the Fund Since</u>	<u>Title</u>
Mary Ellen Stanek, CFA	2000	Chief Investment Officer for Baird Advisors and Managing Director of the Advisor
Gary A. Elfe, CFA	2000	Senior Portfolio Manager and Director of Fixed Income Research and Trading for Baird Advisors and Managing Director of the Advisor
Charles B. Groeschell	2000	Senior Portfolio Manager for Baird Advisors and Managing Director of the Advisor
Warren D. Pierson, CFA	2000	Senior Portfolio Manager for Baird Advisors and Managing Director of the Advisor
Daniel A. Tranchita, CFA	2000	Senior Portfolio Manager for Baird Advisors and Managing Director of the Advisor
M. Sharon deGuzman	2000	Senior Portfolio Manager for Baird Advisors and Senior Vice President of the Advisor

Purchase and Sale of Fund Shares

You may purchase or redeem shares of the Fund on any day the New York Stock Exchange (the “NYSE”) is open by written request via mail (Baird Funds, Inc. c/o U.S. Bancorp Fund Services, LLC, P.O. Box 701, Milwaukee, WI 53201-0701) or overnight delivery (Baird Funds, Inc. c/o U.S. Bancorp Fund Services, LLC, 615 E. Michigan Street, Third Floor, Milwaukee, WI 53202), by wire transfer, by telephone at 1-866-442-2473, or through a financial intermediary. Purchases and redemptions by telephone are only permitted if you previously established these options on your account.

The minimum initial and subsequent investment amounts are shown below, although the Fund may reduce or waive them in some cases in its discretion.

	<i>Initial Purchase</i>	<i>Subsequent Purchases</i>
Investor Class	\$1,000 – Individual Retirement Accounts (Traditional/Roth/SIMPLE/SEP IRAs) and Coverdell Education Savings Account	\$100
	\$2,500 – All Other Accounts	\$100
Institutional Class	\$25,000 – All Account Types	No minimum

Tax Information

The Fund’s distributions may be subject to federal income tax and may be taxed as ordinary income or capital gains.

Payments to Broker-Dealers and Other Financial Intermediaries

If you purchase Fund shares through a broker-dealer or other financial intermediary (such as a bank), the Fund and its related companies may pay the intermediary for the sale of Fund shares and related services. These payments may create a conflict of interest by influencing the broker-dealer or other intermediary and your salesperson to recommend the Fund over another investment. Ask your salesperson or visit your financial intermediary’s website for more information.